





The Manufacturer makes no representations or warranties with respect to this manual and, to the maximum extent permitted by law, expressly limits its liability for breach of any warranty that may be implied to the replacement of this manual with another. Furthermore, The Manufacturer reserves the right to revise this publication at any time without incurring an obligation to notify any person of the revision.

The information provided in this documentation contains general descriptions and/or technical characteristics of the performance of the machinery contained herein. This documentation is not intended as a substitute for and is not to be used for determining suitability or reliability of these machines for specific user applications. It is the duty of any such user or integrator to perform the appropriate and complete risk analysis, evaluation and testing of the machines with respect to the relevant specific application or use thereof. Neither The Manufacturer nor any of its affiliates or subsidiaries shall be responsible or liable for misuse of the information that is contained herein. If you have any suggestions for improvements or amendments or have found errors in this publication, please notify us.

All pertinent state, regional, and local safety regulations must be observed when installing and using this machine. For reasons of safety and to help ensure compliance with documented system data, only the manufacturer shall perform repairs to components.

When devices are used for applications with technical safety requirements, the relevant instructions must be followed.

Failure to observe this information can result in injury or equipment damage. Copyright © 2023

All rights reserved. No part of this publication may be reproduced, distributed, or transmitted in any form or by any means, including photocopying, recording, or other electronic or mechanical methods, without the prior written permission of the publisher.

Bin Tipper Information	
Bin Tipper Model	Fill Here
Model Number	Fill Here
Serial Number	Fill Here
Date Purchase	Fill Here



**Do not use the Bin Tipper before reading and understanding these operating instructions. Note: this equipment can cause serious personnel injury or damage to property if used incorrectly. Retain the Bin Tipper operating manual for future reference.**

## TABLE OF CONTENT

<b>1.0 Instructions .....</b>	<b>4</b>	<b>6.0 Battery Care Guide.....</b>	<b>11</b>
1.1 About this manual .....	4	<b>7.0 Control Panel Fuse.....</b>	<b>11</b>
1.2 Hazard classification .....	4	<b>8.0 Bin Tipper Range – Scheduled Service.....</b>	<b>12</b>
1.3 Ordering information/operator manual .....	5	<b>9.0 Risk Assessment .....</b>	<b>14</b>
1.4 Safety sign maintenance .....	5	9.1 Risk Assessment Matrix .....	14
<b>2.0 Safety Instructions.....</b>	<b>7</b>	9.2 Identified Hazards .....	15
2.1 Safety .....	7	9.3 Risk Assessment Disclaimer .....	17
<b>3.0 Operating Procedures .....</b>	<b>8</b>	<b>9.0 Safety &amp; Warning Labels .....</b>	<b>18</b>
3.1 Moving bin tipper into position .....	8	<b>10.Pre-Delivery Checklist .....</b>	<b>19</b>
3.2 Moving bin tipper with a forklift .....	8		
3.3 Loading and unloading bins .....	9		
<b>4.0 Emptying A Wheelie Bin .....</b>	<b>10</b>		
<b>5.0 Battery Charging Instructions .....</b>	<b>11</b>		

## 1.0 INSTRUCTIONS

### 1.1 About this manual

Thank you for purchasing this machinery. The purpose of this document is to ensure safety of personnel and the reliable continued operation of your machine.

This manual is the original English Instructions as required by the EU Machinery Directive requirement.

This manual is intended for the owner/operator of the machinery described. Please read and ensure you understand both the safety and operating instructions in this manual.

Only trained and authorized personnel should be permitted to operate this machine.

This manual and safety instructions must be retained for future reference and pass them onto subsequent users and operators of the machinery.

For questions about product safety, applications and regulatory compliance please contact The Manufacturer or authorized dealer.

### 1.2 Hazard classification

Decals on this machine and alert symbols and signal words are used throughout this document to indicate safety hazards. Please pay careful attention when you see them. Failure to comply with the instructions accompanying each safety alert symbol may result in property damage, personal injury, or even death.



#### Danger

Indicates a hazardous situation which if not avoided will result in death or serious injury



#### Warning

Indicates a hazardous situation which if not avoided could result in death or serious injury



#### Caution

Indicates a hazardous situation which, If not avoided, could result in a minor or moderate injury



#### Notice

Calls attention to important information that is significant to understanding the operation at hand.

## 1.3 Ordering information/operator manual

Documentation, user and safety instructions and other technical information can be ordered from The Manufacturer or authorized dealer.

## 1.4 Safety sign maintenance

Replace any missing or damaged safety signs. Keep operator safety in mind at all times. Use mild soap and water to clean and maintain safety signage. Replacement safety signs can be ordered from The Manufacturer or authorized dealer.









## 2.0 SAFETY INSTRUCTIONS

### 2.1 Safety

- The operator is responsible to read, understand, and obey manufacturer's instructions and safety instructions provided both in the Operators Manual and displayed on the machine.
- Only trained and authorized personnel should be permitted to operate this machine.
- Do not exceed the S.W.L (safe working load) of the bin lifter. The S.W.L is 600 kg. The S.W.L is the total of the cradle, bin and contents. Never exceed the specified S.W.L of the wheelie bin.
- Only operate bin lifter on level ground. Never use on uneven, sloping or soft ground
- Do not operate if there are damaged or missing parts or safety guarding has been removed.
- Keep all body parts clear of all moving and operational parts of the machine.
- Ensure immediate area around bin lifter is kept clear of persons or objects.
- Do not empty damaged or overflowing wheelie bins.
- Do not empty liquids from closed-top drums or containers.
- When not in operation ensure the key switch is turned to OFF to prevent accidental operation of machine.
- Ensure the unit is charged from a Residual Current (RCD) protected power outlet.
- Use only approved and provided charging cord. All leads should be checked and tagged by approved electrician.
- Maintenance of thBin Tipper should only be carried out by trained and approved technicians.

## WARNING

**Bin tippers can cause serious injury and damage to equipment if not used in accordance with the safety instructions. Never use the bin tipper for any other purpose than its intended purpose.**

## 3.0 OPERATING PROCEDURES

Prior to operating the bin tipper the following checks should always be made to ensure the machine is safe to use.

- Conduct visual inspection to ensure all safety guards and covers on machine are in place.
- The operating surface is firm and flat.
- The operating area is clear of all persons other than the operator.
- The bin tipper is positioned correctly against the dump/skip bin and the two brakes on the rear swivel castors have been activated.
- The key switch is turned clockwise to the ON position.
- The battery gauge indicates sufficient charge for operation. (do not operate under 24 volts )
- Ensure cradle is fully lowered before loading wheelie bin for emptying.

### 3.1 Moving bin tipper into position

- Always ensure charging power lead has been disconnected.
- When moving always ensure the key switch is in the OFF position
- Never move with wheelie bin or load in cradle.
- Turn unit On and raise cradle about 100mm off the ground. Turn unit OFF
- Using the two push handles carefully move the bin tipper so it is position against the side of the dump/skip bin.
- Activate by braked castors.
- Ensure dump/skip bin lids are fully open, to enable safe tipping operation.
- When in position turn unit ON and lower cradle to ground.

### 3.2 Moving bin tipper with a forklift

- Always ensure charging power lead has been disconnected.
- When moving always ensure the key switch is in the OFF position
- Never move with wheelie bin or load in cradle.
- The Wheelie bin tipper may be moved with a forklift, utilizing the fork tyne pockets at the front of the machine.
- Turn unit On and raise cradle 250mm off the ground.

(This will allow fork tynes to be inserted under cradle. Turn unit OFF before moving).

- When in position turn unit ON and lower cradle to ground.



Fork Tyne  
Pockets

## CAUTION

Care must be taken to ensure the end of the fork tynes do not make contact with the inside of the safety door. (Serious damage to unit may occur if these instructions are not followed)



## 3.3 Loading and unloading bins

- Turn unit ON and ensure cradle is lowered to the ground level.
- Open safety door.
- Place wheelie bin into cradle.



- **For 80, 120 & 240 litre**, Ensure outer wheel must be retained on either side of the red retaining bracket
- Up to 2x 240 litre bins can be emptied at a time

## **WARNING**

For smaller 80, 120 & 240 litre Bins Ensure outer wheel must be retained on either side of the red retaining bracket . Incorrectly positioned bins may cause injury and damage to equipment when emptying.



- **For larger 660, 1100 litre bins**, Roll bin in front of the bin retaining arms ensure front of bin is under the lip retaining bracket

## **WARNING**

For larger 660, 1100 litre Bins roll bin in front of the bin retaining arms ensure front of bin is under the lip retaining bracket. Incorrectly positioned bins may cause injury and damage to equipment when emptying.



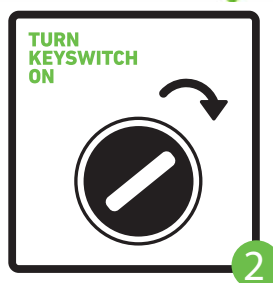
## 4.0 EMPTYING A WHEELIE BIN

- When the bin is properly located in the cradle, close the safety door.
- Press and hold both UP buttons to raise bin and cradle to upper position.
- Release UP button while bin empties.
- To lower press both DOWN buttons.
- When cradle has returned to ground level, open safety door and remove emptied wheelie bin.
- Repeat this procedure to empty another bin.

## BACKSAFE OPERATING INSTRUCTIONS



**POSITION**  
•Position against dump bin and apply both castor brakes.



**TURN KEYSWITCH ON**  
•Also ensure the E Switch on the center of control panel is released.  
•If cradle has been raised for relocation, use both DOWN buttons to lower cradle to ground.



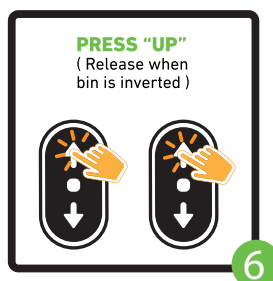
**OPEN SAFETY DOOR**  
•The safety door is fitted with a safety interlock. This means the door will be locked whenever the cradle is raised.  
•If the door is locked, please check cradle has been lowered to ground.



**PLACE BIN ON CRADLE**  
•Wheel the bin into cradle  
•Ensure the left wheel is retained under bracket



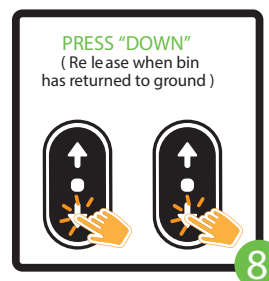
**CLOSE SAFETY DOOR**



**PRESS "UP"**  
(Release when bin is inverted)  
•Press both up buttons together to raise bin for tipping  
•Release buttons when bin is fully raised



**WAIT FOR BIN TO EMPTY**

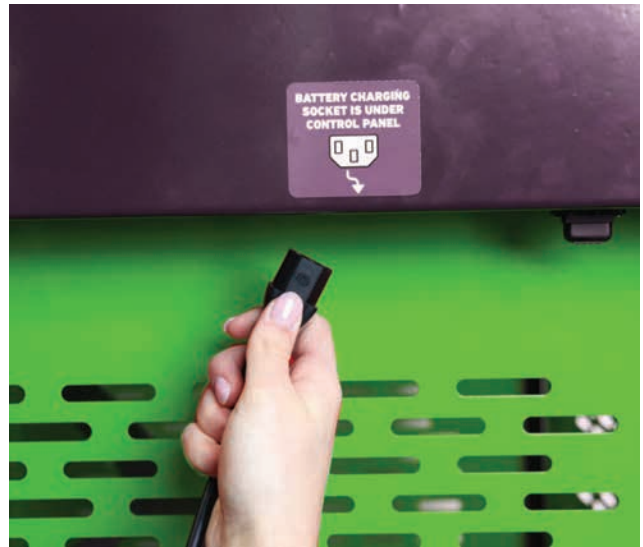


**PRESS "DOWN"**  
(Release when bin has returned to ground)  
•Press both buttons to lower bin to ground  
•After bin is lowered to ground level open safety door and remove bin  
•To empty further bins, repeat procedure

ALWAYS READ AND UNDERSTAND THE OPERATION MANUAL BEFORE USING THIS MACHINE.

## 5.0 BATTERY CHARGING

- The enclosed battery charger is a double insulated smart charger with RCM compliance approval.
- A digital voltmeter is fitted on the control panel. If the voltage shows below 24 volts in resting mode, the machine should not be used. Using the machine under 24 volts will cause damage to the batteries and other components.
- To recharge batteries the charger supply cable plug is inserted into the charger supply socket positioned under control panel and into a single-phase power socket.
- Ensure the supply cable is not connected to the power supply before insertion or removal of the appliance plug at the charger supply port.
- When charging, the charge status is seen in the viewing port on the front face of the control cabinet
- Orange = charging in progress / Green = fully charged
- Charger enters a maintenance mode when fully charged and can be left with power turned on indefinitely without issues.
- Input voltage 110 to 240v 50/60hz supply
- Output voltage 27 VDC 4-amp multistage charger
- Machine battery isolator switch is located on machine side cover to left of control panel. switch must be turned on for machine to operate. Switch should be turned off prior to any maintenance or when machine is not in use for an extended time.



The battery charging socket is located under the control panel

## CAUTION

**A digital voltmeter is fitted on the control panel. If the voltage shows below 24 volts in resting mode, the machine should not be used. Using the machine under 24 volts will cause damage to the batteries and other components.**

## 6.0 BATTERY CARE GUIDE

**This equipment is powered by deep-cycle sealed gel batteries. These batteries need to be cared for to prevent premature failure**

### **Battery charging procedure:**

- Connect battery charger to equipment as per user manual.
- Ensure charger is connected to power and is turned on.
- A full charge will generally take 6-8 hours.
- Do not disconnect charger until charge is complete.

### **To maintain battery performance:**

- Ensure batteries are charged regularly, every night on machines used daily, and once a week on machines used less frequently.
- Ensure batteries are fully recharged before using machine again.
- Do not run batteries down to dead flat prior to recharging, this will reduce the life of the batteries.

## 7.0 CONTROL PANEL FUSE

- 2 x 5-amp fuses are located under the control panel next to the charging socket.

## 8.0 BIN TIPPER RANGE – SCHEDULED SERVICE

### Company

Technician

Date Attended

Serial Number

Model / Type

### Scheduled Service Checklist

General	PASS	FAIL
Check Condition Of Frame ( Crack In Welding And Other Damage)	<input type="checkbox"/>	<input type="checkbox"/>
Check Condition Of Castors	<input type="checkbox"/>	<input type="checkbox"/>
Controls	PASS	FAIL
Check Up / Down Control Works Correctly	<input type="checkbox"/>	<input type="checkbox"/>
Check Cradle Stops When Door Is Opened, Or Check Door Interlock	<input type="checkbox"/>	<input type="checkbox"/>
Check On/Off Switch Operated Correctly (If Lifted)	<input type="checkbox"/>	<input type="checkbox"/>
Electrical	PASS	FAIL
Check Batteries / Battery	<input type="checkbox"/>	<input type="checkbox"/>
Voltage Battery 1	<input type="checkbox"/>	<input type="checkbox"/>
Voltage Battery 2	<input type="checkbox"/>	<input type="checkbox"/>
Check Battery Charger Is Operational (Note If External Or Internal)	<input type="checkbox"/>	<input type="checkbox"/>
Check Voltmeter Is Working	<input type="checkbox"/>	<input type="checkbox"/>
Hydraulic	PASS	FAIL
Check For Leaks, Top Up Hydraulic Oil As Required	<input type="checkbox"/>	<input type="checkbox"/>
Lubricate Ram, Chain And Rollers	<input type="checkbox"/>	<input type="checkbox"/>
Check Wear Plates On Top Of Mast	<input type="checkbox"/>	<input type="checkbox"/>
Replace	PASS	FAIL
Replace Key Switch (Model: 7802419)	<input type="checkbox"/>	<input type="checkbox"/>
Replace Up / Down Switch (Model: 7821025)	<input type="checkbox"/>	<input type="checkbox"/>
Comments		

Please contact Backsafe for Bin Tipper Schedule Service Program

<b>Company</b>		
Technician		
Date Attended		
Serial Number		
Model / Type		
<b>Scheduled Service Checklist</b>		
<b>General</b>	<b>PASS</b>	<b>FAIL</b>
Check Condition Of Frame ( Crack In Welding And Other Damage)	<input type="checkbox"/>	<input type="checkbox"/>
Check Condition Of Castors	<input type="checkbox"/>	<input type="checkbox"/>
<b>Controls</b>	<b>PASS</b>	<b>FAIL</b>
Check Up / Down Control Works Correctly	<input type="checkbox"/>	<input type="checkbox"/>
Check Cradle Stops When Door Is Opened, Or Check Door Interlock	<input type="checkbox"/>	<input type="checkbox"/>
Check On/Off Switch Operated Correctly (If Lifted)	<input type="checkbox"/>	<input type="checkbox"/>
<b>Electrical</b>	<b>PASS</b>	<b>FAIL</b>
Check Batteries / Battery	<input type="checkbox"/>	<input type="checkbox"/>
Voltage Battery 1	<input type="checkbox"/>	<input type="checkbox"/>
Voltage Battery 2	<input type="checkbox"/>	<input type="checkbox"/>
Check Battery Charger Is Operational (Note If External Or Internal)	<input type="checkbox"/>	<input type="checkbox"/>
Check Voltmeter Is Working	<input type="checkbox"/>	<input type="checkbox"/>
<b>Hydraulic</b>	<b>PASS</b>	<b>FAIL</b>
Check For Leaks, Top Up Hydraulic Oil As Required	<input type="checkbox"/>	<input type="checkbox"/>
Lubricate Ram, Chain And Rollers	<input type="checkbox"/>	<input type="checkbox"/>
Check Wear Plates On Top Of Mast	<input type="checkbox"/>	<input type="checkbox"/>
<b>Replace</b>	<b>PASS</b>	<b>FAIL</b>
Replace Key Switch (Model: 7802419)	<input type="checkbox"/>	<input type="checkbox"/>
Replace Up / Down Switch (Model: 7821025)	<input type="checkbox"/>	<input type="checkbox"/>
<b>Comments</b>		

Please contact Backsafe for Bin Tipper Schedule Service Program



## 9.0 RISK ASSESSMENT

### 9.1 Risk Assessment Matrix

Risks relating to the identified hazards have been assessed according to the risk matrix below:

		Consequence				
Likelihood	Risk Rating Chart	1	2	3	4	5
	E. Almost Certain	H	H	E	E	E
	D. Likely	M	H	H	E	E
	C. Possible	L	M	H	E	E
	B. Unlikely	L	L	M	H	E
	A. Rare	L	L	M	H	H
	<b>Class - Extreme</b>	<b>Act Immediately</b> The proposed process activity must not proceed. Steps must be taken to lower the risk level to as low as reasonably practicable using the hierarchy of risk controls				
	<b>Class - High</b>	<b>Act Today</b> The proposed activity can only proceed provided that: <ol style="list-style-type: none"> <li>1. The risk level has been reduced as low as reasonably practicable using the hierarchy of risk controls</li> <li>2. The risk controls must include those identified in Legislation, Australian Standards, Codes of Practice etc.</li> <li>3. The risk assessment has been reviewed and approved by the supervisor</li> <li>4. A safe work procedure of safe work method statement has been prepared.</li> <li>5. The supervisor must review and document the effectiveness of the implemented risk controls</li> </ol>				
	<b>Class - Medium</b>	<b>Act This Week</b> The proposed activity can only proceed provided that: <ol style="list-style-type: none"> <li>1. The risk level has been reduced as low as reasonably practicable using the hierarchy of risk control</li> <li>2. The risk assessment has been reviewed and approved by the supervisor</li> <li>3. A safe work procedure of safe work method statement has been prepared.</li> </ol>				
	<b>Class - Low</b>	<b>Act This Month</b> Managed by documented routine procedures which must include the application of the hierarchy of controls				
Consequence		Likelihood				
1. Insignificant	No injury or damage expected	E. Almost certain	Could happen any time			
2. Minor	Could cause 1st aid injury or minor damage	D. Likely	At some point in time			
3. Moderate	Could require medical attention and several days off work or moderate damage	C. Possible	Possible it might happen			
4. Major	Could cause serious long term illness or injury or major damage	B. Unlikely	Not likely to happen			
5. Catastrophic	Could kill, cause permanent disability or ill health or cause very serious damage	A. Rare	Could happen, but probably never will			

## 9.2 IDENTIFIED HAZARDS

<b>Hazard :</b>	<b>Incorrect Operation</b>
<b>Rating :</b>	<b>3D - High</b>
<b>Control Measure :</b>	Manufacturers instructions should be available at all times to operators. Only persons who are qualified, trained and experienced can operate this item of equipment. If there is not a competent person available for operation of this item of plant then only persons who are supervised by a competent person can operate this item of plant. All operators should be inducted and supervised until assessed as competent. Equipment is designed to be compacted or folded and set order, follow manufactures instructions.
<b>Standards :</b>	<b>AS/NZS ISO 31000:2009</b>
<b>Hazard :</b>	<b>Equipment Failure</b>
<b>Rating :</b>	<b>3A - Medium</b>
<b>Control Measure :</b>	An operational "Pre start" checklist should be developed and the checklist completed daily before operation. If any faults are detected, they must be rectified prior to commencement of operation. These inspections must be documented as part of the organisations equipment safety management programme. All electrical equipments should be tested and tagged as per AS3760.
<b>Standards :</b>	<b>AS/NZS ISO 31000:2009</b>
<b>Hazard :</b>	<b>Electrocution</b>
<b>Rating :</b>	<b>4B - Medium</b>
<b>Control Measure :</b>	Plant must only be serviced by a licenced electrician. Access to the control panel should be restricted to qualified personnel only. The control panel should be fitted with a lock to restrict access by unqualified personnel where possible. All electrical equipment should be tested and tagged as per AS3760
<b>Standards :</b>	
<b>Hazard :</b>	<b>Crushing</b>
<b>Rating :</b>	<b>2B - Low</b>
<b>Control Measure :</b>	The <b>Wheelie Bin Tipper</b> is fitted with guarding. This must be in place during and only removed by pproved maintenancé personnel
<b>Standards :</b>	
<b>Hazard :</b>	<b>Fire</b>
<b>Rating :</b>	<b>3B - Medium</b>
<b>Control Measure :</b>	Tempering with the batteries or incorrect use of charging may lead to a fire. Ensure manufacturers instructions are followed at all times when charging batteries.

<b>Hazard :</b>	<b>Slips / Trips / Falls</b>
<b>Rating :</b>	<b>2B - Low</b>
<b>Control Measure :</b>	Tempering with the batteries or incorrect use of charging may lead to a fire. Ensure manufacturers instructions are followed at all times when charging batteries.
<b>Standards :</b>	<b>AS/NZS 4360, AS 1470</b>
<b>Hazard :</b>	<b>Unauthorised Use</b>
<b>Rating :</b>	<b>3D - High</b>
<b>Control Measure :</b>	This <b>Wheelie Bin tipper</b> is designed for use in multiple occupational environments. Ensure only those authorised and trained to operate this do so.
<b>Standards :</b>	<b>AS/NZS ISO 31000:2009</b>
<b>Hazard :</b>	<b>Maintenance Records</b>
<b>Rating :</b>	<b>3B - Medium</b>
<b>Control Measure :</b>	A risk assessment must be completed for this item of equipment once implemented into the users workplace. Service and maintenance records must be developed and maintained as part of your plant safety management programme.  This includes regular inspections of the general condition of the item of equipment. All manufacturers prescribed, scheduled and non scheduled maintenance must also be documented as part of these records.
<b>Standards :</b>	<b>AS/NZS ISO 31000:2009</b>
<b>Hazard :</b>	<b>Modifications</b>
<b>Rating :</b>	<b>3D - High</b>
<b>Control Measure :</b>	This machine should be not modified from the manufacturers specification without the manufacturers written approval.
<b>Standards :</b>	<b>AS/NZS ISO 31000:2009</b>
<b>Hazard :</b>	<b>Dust</b>
<b>Rating :</b>	<b>2B - Low</b>
<b>Control Measure :</b>	The <b>Wheelie Bin Tipper</b> is fitted with guarding. This must be in place during and only removed by approved maintenance personnel
<b>Hazard :</b>	<b>Trapping</b>
<b>Rating :</b>	<b>5A - High</b>
<b>Control Measure :</b>	The <b>Wheelie Bin Tipper</b> is of the caged type and should only be used for intended purpose. Incorrect use could lead to trapping within the caged area. Follow manufactures instructions at all times. Ensure no one is within the <b>Bin tipper</b> caged area when tipping takes place.

### 9.3 Risk Assessment Disclaimer

This risk assessment has been prepared to cover the sale or transfer of this item of plant between the supplier and the purchaser. This report applies only to sale or transfer of this specific item of equipment. This risk assessment is provided to meet duty of care obligations of the supplier/seller as set out in WHS regulations for the supply of plant and the sale and transfer of plant.

The safety hazards associated with the operating and maintaining of this item of plant have been identified as far as practical by visual inspection. This item of plant is being sold in an “as-is” condition with known and unknown safety hazards. No physical testing has been conducted.

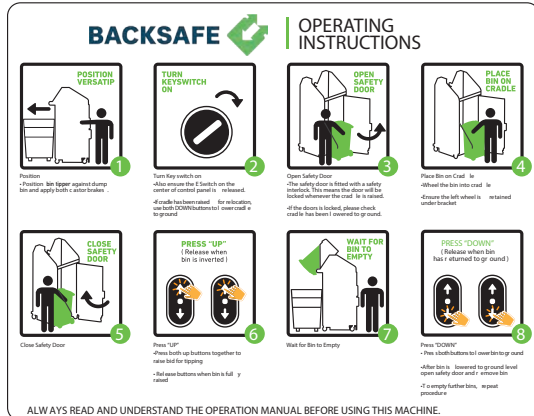
This document is not intended to provide information on, nor warrant the mechanical, electrical or structural condition of this item of plant. Any information on standard features have been supplied through the manufacturer and should be used as a guide only until otherwise verified.

This item of plant should be further assessed, tested and inspected or dismantled as necessary to identify any further hazards and / or risks relating to specific workplace use, which are currently unknown, in accordance with relevant standards, regulations and acts. Under common law and WHS acts, regulations and code of practice, there is a for the plant owner, employer and operator to exercise a duty of care in the safe operation and maintenance of plant.

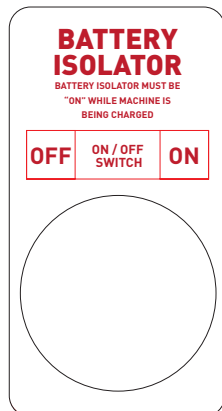
Before this item of plant is supplied to, or used at any workplace it must be inspected to ensure it is in a fully operational, safe and serviceable condition and that operators and maintenance personnel are appropriately trained in the use & maintenance of this item of plant.

The purchaser is responsible to conduct and document a risk assessment before and after the equipment is commissioned to identify, assess and control any site specific risks relating to the equipment and work environment.

## 9.0 SAFETY & WARNING LABELS



69121030



69121031



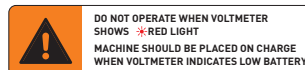
69121036



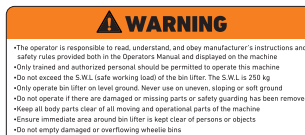
69121032



69121044



69121035



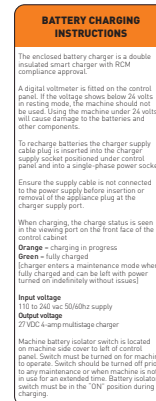
69121042



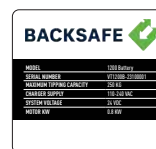
69121043



69121041



69121034



69121038



69121033



69121040



69121039

Description	Order Code	Description	Order Code
Operation Instructions	69121030	Serial Plate	69121038
Battery Isolator	69121031	Control Panel	69121039
Charging Socket / Battery Charging Indicator	69121032	Wheel Bracket	69121040
Fork Tyne Pockets	69121033	Caution Fork Tyne	69121041
Battery Charging Instructions	69121034	Safety/Warning Instructions	69121042
Warning Voltmeter Indicator	69121035	Warning Crush Zone	69121043
Bin Placement – Inside Door	69121036	Battery Charging Indicator	69121044



## 10. PRE-DELIVERY CHECKLIST

### BinTipper Information

Bin Tipper Model

Model Number

Serial Number

Date

### Checklist

#### Mechanicals

PASS

FAIL

Check Operation Of Tipper – Multiple 600kg Lifts

☐
☐

Check Operation Of Tipper – Multiple Empty Lifts

☐
☐

#### Accessories

PASS

FAIL

Operators Manual Is Included In Plastic Case

☐
☐

Charging Lead Is Supplied

☐
☐

Start Up Key Is In Place

☐
☐

#### Safety Stickers

PASS

FAIL

69121030 – Operating Instructions

☐
☐

69121031 – Battery Isolator

☐
☐

69121032 – Charging Socket Locator / Battery Charging Indicator

☐
☐

69121033 – Fork Tyne Pockets

☐
☐

69121034 – Battery Charging Instructions

☐
☐

69121035 – Warning Voltmeter Indicator

☐
☐

69121046 – Bin Placement – Inside Door

☐
☐

69121037

☐
☐

69121038 – Serial Plate

☐
☐

69121039 – Control Panel / Warning - Voltmeter

☐
☐

69121040 – Wheel Bracket

☐
☐

69121041 – Caution Fork Tyne

☐
☐

69121047 - Safety / Warning Instructions

☐
☐

69121043 – Warning Crush Zone

☐
☐

69121044 - Battery Charging Indicator

☐
☐

Technician Conducting Inspection

Signature

Wheelie Bin Tipper



 **INNOVATION HUB (BACKSAFE HQ)**  
Level 5, 167 St Georges Terrace, Perth WA 6000

 **PERTH SHOWROOM AND WAREHOUSE**  
60 Mordaunt Circuit, Canning Vale WA 6155

[backsafeaustralia.com.au](https://backsafeaustralia.com.au)

 **1300 305 314**

