

STURGO® COMPACT ELECTRIC NON-STRADDLE STACKER

THE STURGO® LIFT RANGE

WHY?

FULL ELECTRIC POWER TO REDUCE INJURY RISK WHEN HANDLING PALLETS AND PALLET BINS. PROVIDE YOUR TEAM WITH THE EQUIPMENT FOR INCREASED EFFICIENCY AND SPEED.

- Electric handling of pallets and pallet bins with minimal working space required
- Prevent costly accidents from manually lifting, lowering and carrying
- Low energy consumption and high performance
- Simplified design to provide everything you need and nothing you don't
- Good for the environment - no nasty fuel emissions
- Quieter than combustion powered forklifts

KEY FEATURES

- Highly specialised drive and hydraulics
- Non-straddle chassis allows lifting of abnormal sized items with fork pockets, as well as pallets
- Safety hydraulic feature prevents mast free-fall in case of hydraulic failure
- Emergency stop button
- Multi-lifting limited switch ensures travel safety
- Low speed mode automatic activation
- Anti-roll braking device
- Ergonomic handle with long arm
- Side-positioned user control ensures excellent visibility
- On-board battery charger
- Electric drive / electric lift

TECHNICAL BRIEF

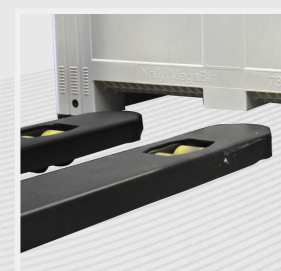
- Capacity 1200kg
- Battery voltage/rated capacity 170Ah
- Electro-magnetic brake



Ergonomic handle



Watch the demo online!



Non-straddle chassis

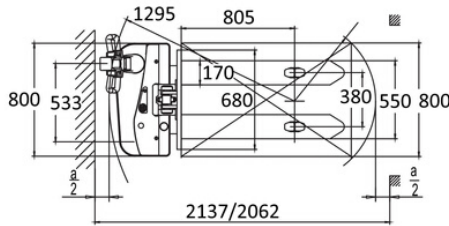
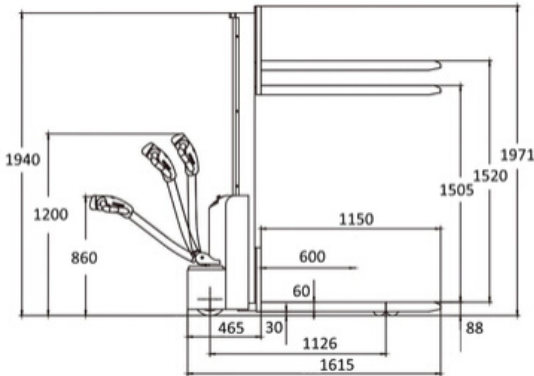


Side-positioner user control



STURGO[®] COMPACT ELECTRIC NON-STRADDLE STACKER

THE STURGO[®] LIFT RANGE



General

Model	11740315 / ES12-12MM
Capacity	1200 kg
Load Centre	600 mm
Lifting Type	Electric
Operating Type	Pedestrian

Wheels

Material	PU
Wheel Base	1126 mm
Quantity (driving/castor/bearing)	1/1/4
Driving Wheel	Ø210 x 70 mm
Castor Wheel	Ø130 x 55 mm
Bearing Wheel	Ø80 x 60 mm

Dimensions

Min. Fork Height	88 mm
Max. Fork Height	1520 mm
Overall Fork Width	550 mm
In-between Fork Width	210 mm
Fork Dimensions (length/width/depth)	1150 / 170 / 60 mm
Overall Dimensions (length/width/height)	1615 / 800 / 1940 mm
Min. Turning Radius	1295 mm

Performance

Travel Speed (laden/unladen)	4 / 4.5 km/h
Lifting Speed (laden/unladen)	120 / 220 mm/s
Lowering Speed (laden/unladen)	120 / 110 mm/s
Max. gradeability (laden/unladen)	3 / 10 %

Electrical

Drive Mode	DC
Drive Motor	24V 0.65Kw
Lift Motor	24V 2.2Kw
Battery Type	Maintenance-free gel
Battery Capacity	2 x 12V/85Ah

Weights

Battery Weight	2 x 25 kg
Net Weight (includes battery)	462 kg

