

# STURGO<sup>®</sup> COMPACT ELECTRIC PALLET JACK 1.5T II

THE STURGO<sup>®</sup> LIFT RANGE

## WHY?

IF YOU'RE LOOKING TO UPGRADE YOUR MANUAL PALLET JACK TO A FULL ELECTRIC MODEL, REDUCING OPERATOR STRAIN AND IMPROVING PRODUCTIVITY, THIS IS THE PERFECT MODEL

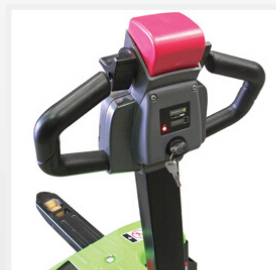
- Agile enough to manoeuvre the smallest warehouse
- Prevent costly accidents from manually lifting, lowering and carrying
- Save time and manpower with powerful 1.5 metric tonne capacity
- Simplified design to provide everything you need and nothing you don't
- Good for the environment - no nasty fuel emissions
- Quieter than combustion powered forklifts
- Up to 3.5 hours working on a full load

## KEY FEATURES

- Compact body for easy storage
- No unnecessary 'gimmicks'
- Stylish semi-enclosed design
- Powerful performance
- Tough long-lasting engineering
- Solid body frame
- Ergonomically designed handle
- Long-life built-in battery
- No hassle maintenance
- Affordable price and excellent investment
- Built in battery charger
- Electric drive / electric lift

## TECHNICAL BRIEF

- Capacity 1500kg
- Battery voltage/rated capacity 60AH
- Electro-magnetic brake



Ergonomic handle



Built in battery charger



Handy pocket on both sides

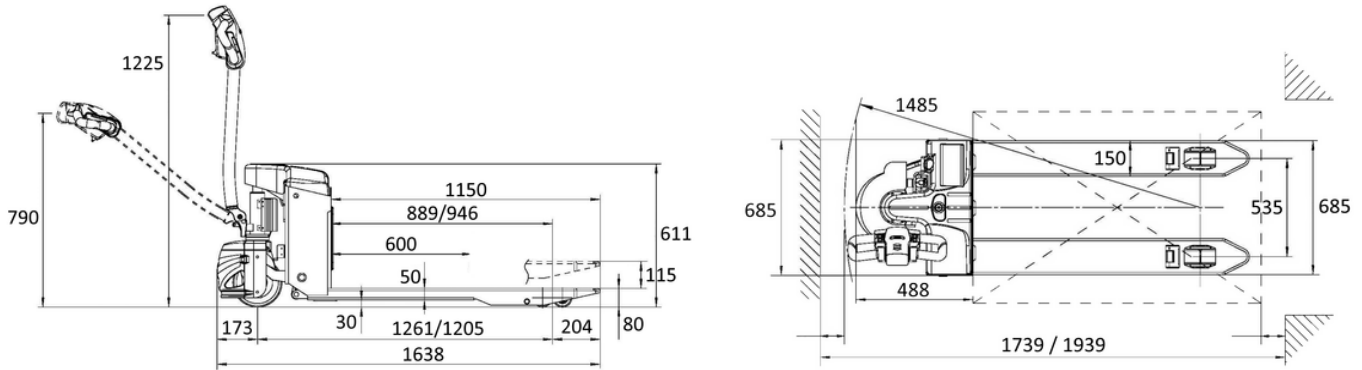


Tough and durable



# STURGO<sup>®</sup> COMPACT ELECTRIC PALLET JACK 1.5T II

THE STURGO<sup>®</sup> LIFT RANGE



## General

<b>Model</b>	11740143 / EPT20-15ET2
<b>Capacity</b>	1500kg
<b>Load Centre</b>	600mm
<b>Lifting Type</b>	Electric
<b>Operating Type</b>	Pedestrian

## Wheels

<b>Material</b>	PU
<b>Wheel Base</b>	1261/1205mm
<b>Quantity (driving/bearing)</b>	1/2
<b>Bearing Wheel</b>	Ø78 x 60 mm
<b>Driving Wheel</b>	Ø210 x 70 mm

## Dimensions

<b>Min. Fork Height</b>	80mm
<b>Max. Fork Height</b>	115mm
<b>Overall Fork Width</b>	685mm
<b>In-between Fork Width</b>	385mm
<b>Fork Dimensions (length/width/depth)</b>	1150/150/50 mm
<b>Overall Dimensions (length/width/height)</b>	1638/685/1225 mm
<b>Min. Turning Radius</b>	1485mm

## Performance

<b>Travel Speed (laden/unladen)</b>	4/4.5 km/h
<b>Lifting Speed (laden/unladen)</b>	29/38 mm/s
<b>Lowering Speed (laden/unladen)</b>	46/33 mm/s
<b>Max. gradeability (laden/unladen)</b>	2/6%

## Electrical

<b>Drive Mode</b>	DC
<b>Drive Motor</b>	24V 0.65Kw
<b>Lift Motor</b>	24V 0.84Kw
<b>Battery Type</b>	Maintenance-free gel
<b>Battery Capacity</b>	2 x 12V/65Ah

## Weights

<b>Battery Weight</b>	2 x 22.5kg
<b>Net Weight (includes battery)</b>	195kg

